

# DIGITAL CAMPUS ARCHITECTURE (E-GOVERNANCE)

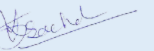


## Mahatma Gandhi University of Medical Sciences and Technology

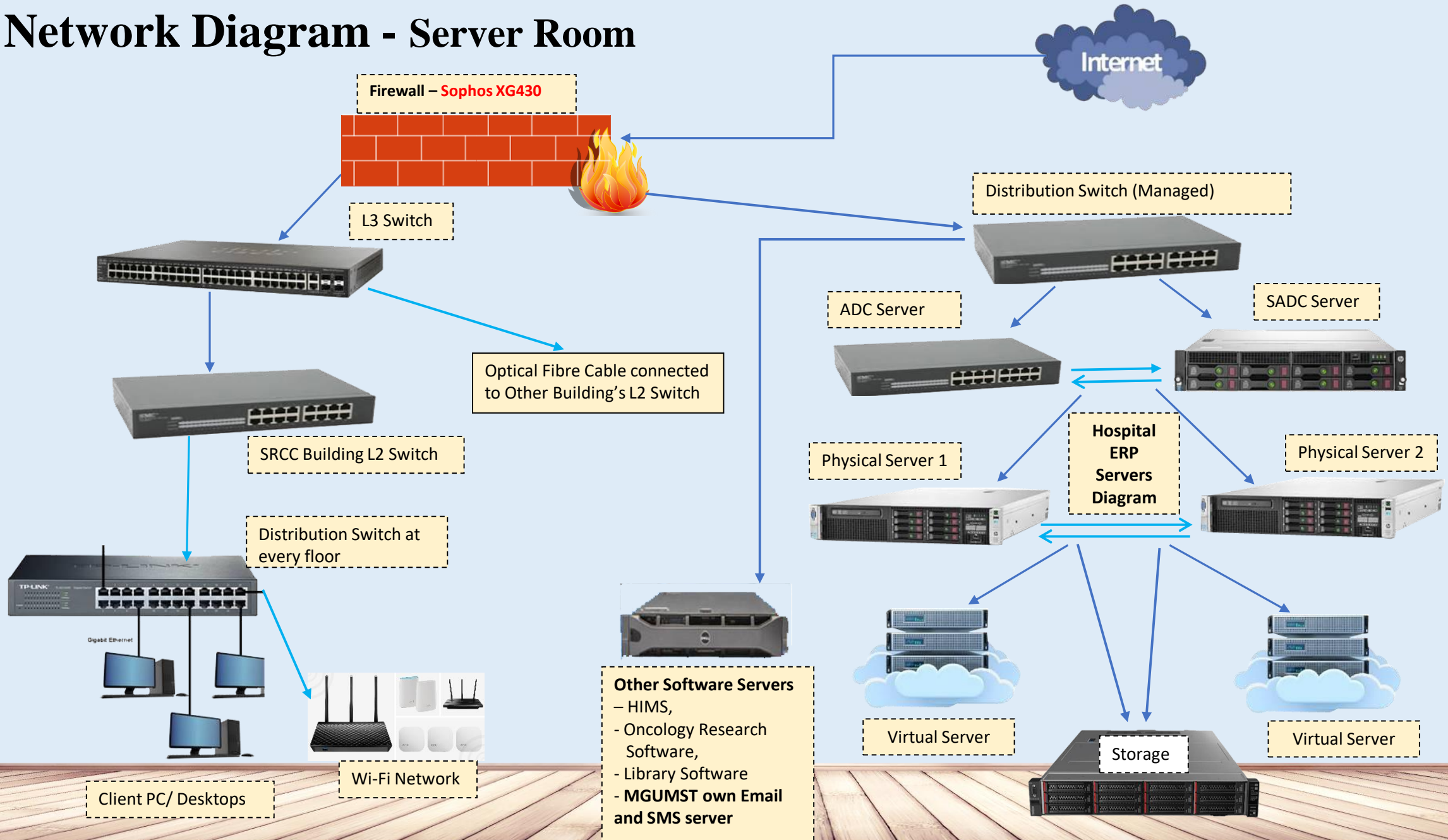
RIICO Institutional Area, Sitapura, Tonk Road, JAIPUR – 302 022

Ph. 0141-2771777

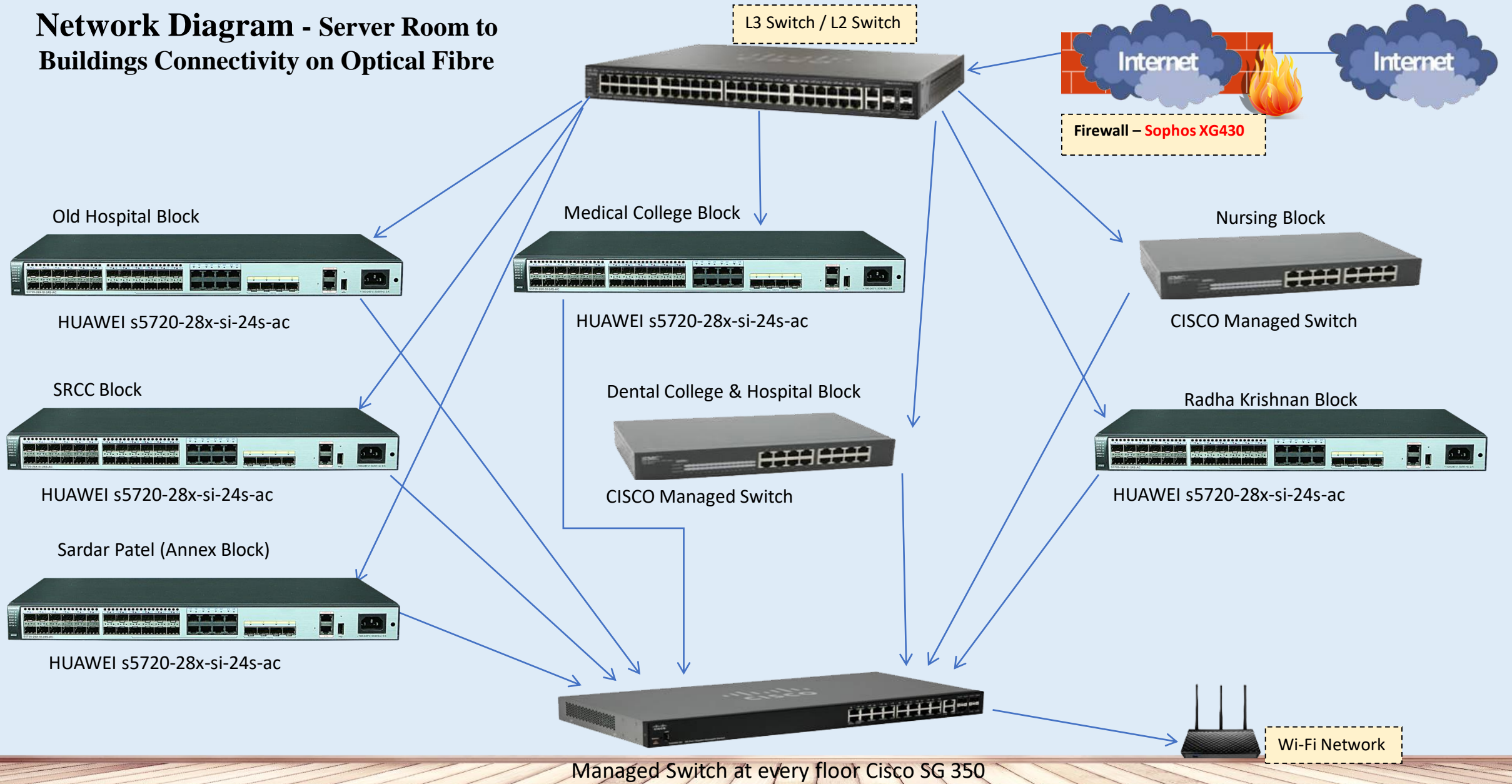
[www.mgumst.org](http://www.mgumst.org)

  
PRESIDENT  
Mahatma Gandhi University of  
Medical Sciences & Technology  
Sitapura, JAIPUR-302 022

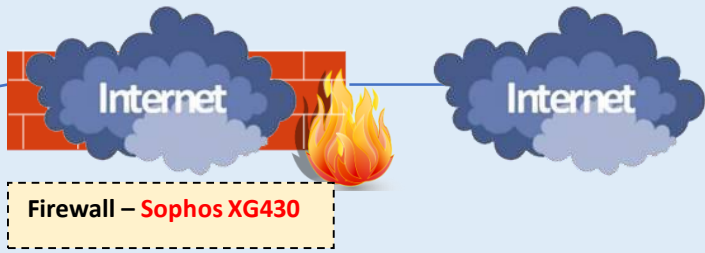
# Network Diagram - Server Room



# Network Diagram - Server Room to Buildings Connectivity on Optical Fibre



L3 Switch / L2 Switch



Old Hospital Block

Medical College Block

Nursing Block

HUAWEI s5720-28x-si-24s-ac

HUAWEI s5720-28x-si-24s-ac

CISCO Managed Switch

SRCC Block

Dental College & Hospital Block

Radha Krishnan Block

HUAWEI s5720-28x-si-24s-ac

CISCO Managed Switch

HUAWEI s5720-28x-si-24s-ac

Sardar Patel (Annex Block)

Managed Switch at every floor Cisco SG 350

Wi-Fi Network



# SOLUTION ARCHITECTURE

Layers				External Services
<b>Client</b>	<b>Network</b>	<b>Application</b>	<b>Data</b>	Web Services
Super Admin	Internet	University ERP	Common Database	e-mail services
Top Management	Local LAN	Hospital ERP	Web Services	SMS Gateway
Department Admin	Wi-Fi	Research Software		Biometrics
Students		Staff & Student ID Cards		Payment Gateway
Parents Portal				RFIS / Card Reader
Patients Services				Data Integration

# E-GOVERNANCE IN MGMUST

---

- The network is protected and controlled by Sophos XG430 Firewall.
- MGUMST have been equipped with 1 GBPS Internet Lease Line from Tata Tele Services Pvt. Ltd., which gets terminated in Data Center/ Server Room.
- All the servers are placed in the Server Room and is not at all accessible from outside the campus
- From the Server Room, the network is distributed to all buildings via 10 GBPS / 1 GBPS Fiber Uplinks.
- All network switches are Managed Switch with VLAN.
- Institutes Database are uploaded on Government web portals i.e. NAAC, NMC, DCI, INC portals.



# INTEGRATED SOLUTION FRAMEWORK

Colleges	Admission	Fee Schedule	Library
Departments	Students	Examinations	Alumni
Programs	Time Table	Results	Feedback
Semesters	Attendance	Marksheets	Reports
Subjects	Assignments	Certificates	Hospital Services
Faculties	Clinical Postings		Pharmacy
Syllabus	Internal Assessments		Stores
	Field Visits		

Digital Campus Framework

# E-GOVERNANCE IN ADMINISTRATION

---

- All Hospital related activities are automated with HIMS, PACS & Pharmacy Software.
- Attendance is being captured by Biometric device at each location of institute.
- All the Servers, Desktops, NUC and Laptops are licensed with proper Microsoft Licenses.
- All the Servers and Clients are protected by Antivirus (i.e. Sophos End Point Security and Seqrite End Point Security).
- All the websites are maintained / updated regularly by M/s Visual Dapple, Jaipur.





# E-GOVERNANCE IN FINANCE & ACCOUNTS

---

- For fulfill the needs of accounting and finance, Tally ERP is in place and is updated to latest version time to time.
- For all the online payments, we are in process of precuring the payment gateway from Canara Bank.



# E-GOVERNANCE IN STUDENT ADMISSION & EXAMINATION SUPPORT

---

- College ERP Microsoft Dynamics NAV 2016 procured for automation.
- The library and information services activities have been made fully automated using KOHA: ILMS with integrated In/Out system.
- LCD projectors interfaced with computers have been installed in all the Lecture Halls/Class Rooms to undertake Computer-Aided Teaching/Learning as well as for presentations